

Monthly Meetings

Welcome to the Wycliffe Lutterworth U3A. We meet on second Thursday of each month at the Methodist Church Hall. Tea, coffee and biscuits available from 10am – 10.30am. An opportunity to meet friends old and new, book exchange, information about trips etc.

Our speaker this month is our very own **Richard Hill**:-

The Life and Works of Agatha Christie



The Life and works of Agatha Christie

In this talk, Richard Hill will take us through the story of one of the world's most famous writers, whose own life was as exciting and mysterious as any of her novels or plays. We will learn about the background to some of her classic tales and the origins of her most famous detectives, and the episode which brought the nation to a standstill. The talk will contain some key film clips and will give you the chance to show off your own detective knowledge.

In short, it would be a crime to miss it.

Table of Contents

<u>Notices</u>	3
<u>Art Appreciation</u>	8
<u>Lively Discussion</u>	9
<u>Gentle Cycling Group</u>	13
<u>Coniston Walking Holiday 9-13 October 2023</u>	14
<u>Coniston Holiday Photo Caption Competition</u>	20
<u>Can Poetry and Technology Mix?</u>	21
<u>French Cafe</u>	22
<u>4th Wednesday Walking Group – October 2023 Walk Report</u>	23
<u>4th Wednesday Walking Group – November Walk</u>	24
<u>4th Wednesday Walking Group – Advance Notice Walk</u>	25
<u>ESTG October Event- Visit to Coventry Transport Museum</u>	26
<u>U3A Snail’s Walking Group</u>	33
<u>U3A History Group Report - October 2023</u>	35
<u>Photography Group - October 2023 report</u>	38
<u>Poetry Group Report</u>	41
<u>Committee Members</u>	42

Notices

SPECIAL NOTICE

This is notice of a **Special General Meeting (SGM)** of the Wycliffe Lutterworth u3a at the December monthly meeting - **Thursday 14th December 2023.**

Venue – Wycliffe Memorial Methodist Church, Bitteswell Road, Lutterworth, Leics. LE17 4EL.

Time – **10:15 hrs.**

The SGM relates to proposed minor changes to our existing constitution. These changes have been requested by The Third Age Trust and relate to our intended charity registration with the Charity Commission.

Full details will be circulated to all members via email within the prescribed time frame ahead of the December meeting.

This SGM should not impact upon our normal monthly activities and guest speaker.

Colin Beadle (Chairperson)

Monthly Meeting Thursday 9th November 2023

Addition to Meeting

Many of you will be aware of a public consultation process currently taking place inviting people to have their say on proposals to improve healthcare services in Lutterworth. The consultation process runs from 23/10/2023 to 14/01/2024.

We will be welcoming **Sue Venables** from the **NHS** to provide information about the public consultation process and how individuals can participate.

This consultation process is important to all of us – to allow us to have our say and hopefully our input will help model healthcare services of the future.

There will be a short presentation (approximately 20 minutes) by Sue Venables after our normal monthly speaker.

I appreciate some members will already have seen the presentation at the Lutterworth u3a meeting in October. There will be an opportunity to leave our meeting at the conclusion of our main speaker.

Colin Beadle (Chairperson)

Wycliffe Lutterworth u3a Committee

Membership Records Secretary Required



Dear All,

Our current Membership Records Secretary will be standing down at our next AGM in March 2024. This is now four months away and we are asking for members, who are interested in taking on this vital role, to contact us now.

The Membership Records Secretary plays an essential role in ensuring the continuity of our u3a by maintaining an accurate membership database. This role primarily involves the recording of annual subscription payments along with changes to contact details of our members.

In addition to managing the membership database, the Membership Records Secretary will occasionally be responsible for disseminating information and newsletters from the Third Age Trust. Consequently, this is an important request that directly impacts the continued existence of the Wycliffe Lutterworth u3a

We understand that taking on a role within the u3a requires time and commitment but the rewards are immense. The role is interesting, enjoyable and a focal point for both our existing and new members.

Our membership database is maintained on “Beacon” - a computer-based system / program developed for the Third Age Trust and used by numerous u3a groups. Training and support for using this system will be provided for as long as is necessary.

If you are interested in becoming the Membership Records Secretary or would like to learn more about the role, please contact me or one of the Committee members. Your willingness to consider this position is vital to the continued existence of the Wycliffe Lutterworth u3a.

Thank you for your ongoing support.

Colin Beadle - Chairperson

Lunch Group



I am delighted to announce that we have a new coordinator to enable our **Lunch Group** to continue.

Linda has kindly stepped forward and is planning for the first outing to be February 2024.

Further details will follow via the Bulletin.

The role of coordinator for **Ethnic Dining** remains vacant. If anyone is interested in taking on the coordinator role I would be very pleased to hear from you.

Colin (Chairperson & Groups Coordinator)

Please bring along your used stamps to the next meeting

As you know, Liz White of Lutterworth U3A is collecting used stamps on behalf of Medical Detection Dogs. They can be any used stamps (even just 1st or 2nd Class) but please could you ensure they have approximately a 1cm (roughly a finger's width) surround.

Please bring them along and give them to Sue Creeden at the monthly meeting. Alternatively, you can pop them through her door – 25 Holly Drive, Lutterworth. Sue will then pass them on to Liz.



Many thanks.

Sue

* * * * *

[Return to Contents](#)

Art Appreciation

Co-ordinator: Ursula

We met on Friday, 6.10.2023 at my house to share our encounters and experiences with Art over the summer holidays. And there were many and so varied.

We were introduced to “THE ANNUNCIATION OF CORTONA”, an Italian Renaissance painting, 600 years old, with the colours still stunningly vibrant, combined with early use of perspective.

Followed by a report on “DOVECOTE”, a world-renowned weaving studio in Edinburgh and the summer exhibition of “SCOTTISH WOMEN ARTISTS”.

A recount of a walk following the “TEXTILE TRAIL” in Leicester gave us a good insight into textile Art.

The Cambridge “FITZWILLIAM MUSEUM” was recommended as a real treasure trove.

We then heard about the amazing, internationally acclaimed “PORSCHE DESIGN CENTRE” in Zell am See, Austria, showing us the vital connection of Form - Function - Sustainability.

Finally we dived into the world of “DALI - THE ENDLESS ENIGMA” and “GAUDI - ARCHITECT OF THE IMAGINARY”, both immersive exhibitions in Amsterdam.

After this tour around the UK and Europe and the periods and styles we tried to schedule and find topics for the next few sessions.

We shall be meeting: 10.11.2023 - Outing to New Walk Museum, Leicester
8.12.2023 - Festive Art Quiz (BVH)

Ursula

[Return to Contents](#)

Lively Discussion

9/10/23 - Should the state pension be means tested?

Our welfare state is based on people working and contributing to society for most of their lives, with their contributions assuring them of a basic pension – not a fortune, but enough to enable them to afford essential bills, when they are too old to continue working.

Currently the state pension is a universal benefit that is not means tested; so personal wealth or assets do not impact on eligibility. Payments are simply based on National Insurance contributions paid for 10 years or more over working lives.

Allegedly the lowest pension in the developed world, the state pension, at around 10,600 for new retirees or £8,100 plus second state pension or SERPS, is hardly a king's ransom. With a weekly payment lower than that of the National Minimum Wage for 18–20-year-old pensioners cannot earn more in future to make up for low incomes now.

Older generations have been assured too, by successive Prime Ministers and opposition parties, that their small state pensions will be protected. This is not only a political choice about spending priorities, it is also a matter of morality and social responsibility. Pensioners are still important members of our society and our welfare state contract requires them to be treated reasonably.

Should State Pensions be means tested, or, as the Peter Beresford the writer and social commentator wrote in The Guardian; “Means Testing does not work like universal benefits, it denies people entitlements they have contributed to and are eligible for”

Certainly, the International Monetary Fund would not agree with him. The IMF has recently said that the UK Government should consider means testing the state pension to protect the country's public finances from the rising costs of an ageing population.

We know there are some well off pensioners who have plenty of income or other assets to supplement their state pension, but many are living on very low incomes.

Over 50 billion a year is also spent on incentives for private pensions which are supposed to supplement the minimal state pension, that is how our National Insurance welfare state has always been supposed to work. With automatic enrolment being a fairly new concept, many of today's pensioners did not all have the chance to build a private pension when they were working. As a result they are totally dependent on the state pension, to which they have contributed, often for decades.

The idea of means testing the state pension has been discussed occasionally, particularly by social commentators, over the past few years, but has gained momentum recently due to the inflation rise in April this year and with a possible rise in 2024. Means testing the state pension is a political hot potato and any and every politician regardless of persuasion turns grey and stutters when asked their opinion!!

It is true that whilst high earners were more likely to be able to save and invest for their retirement, those on lower incomes may not have had that opportunity. Despite that, research carried out by Age UK in 2023, (Yes, I am aware there might be some bias with the participants!), many people feel that by contributing to a universal benefit, pensioners are entitled to their rate of state pension in full.

Given that the state pension is included in taxable income, is that not a form of means testing for anyone with a private pension? Presently there need only be a negligible amount of additional income to become liable to tax, particularly for newer retirees.

Retirement income in the form of private pensions is considerably higher in the UK at 30%, than in other European countries, such as Germany at 5%, and a negligible amount in both Spain and France. Private pensions of course, attract income tax accordingly, which suggests many retirees are paying income tax on their pensions already.

The Labour Government in the early 2000s extended pensioner means testing significantly when it introduced pension credit. Nowadays this tops up the income of the poorest single pensioners to a few pounds a week below the level of the full flat rate state pension and a lot less than double that for couples. It is a valuable safety net to prevent the elderly falling into absolute destitution. However, it is also important to recognise the fact that in the years after pension credit launched, private pension saving plummeted. Any plausible system of meant-testing the state pension would have the same result. This was confirmed in a Joseph Rowntree Report published in August 2014, and repeated in the Age Concern report of 2023. It was further argued by Joseph Rowntree that means testing undermines the core objectives of the welfare state – social integration, justice and overcoming dependency.

Despite political rhetoric to the contrary, means testing by any other name is already impacting on retirement income. The removal of the TV Licence for the over 75s, whether the responsibility of the BBC or the Government is a means test. Only pensioners receiving pension credit continue to have this benefit. In the past 5 years, full state pension entitlement was removed from the armed services, who from an arbitrary date were deemed not to have paid full National Insurance contributions, but were unknowingly contracted out for their term of service. Thereby not entitled to full state pension which impacts dramatically in some cases, on their retirement income.

There is a huge cost attached to means testing, and arguably it is not always targeted on those most in need.

Professor Peter Beresford the Emeritus Professor and writer stated in The Guardian that “Means testing does not work like universal benefits, it denies people entitlements they have contributed to and are eligible for”

Universal benefits are simple and economical to administer and operate. The same cannot be said for means testing even in this technological age. It entails a lot more bureaucracy, likely to swallow up any apparent savings and requires weighty, IT systems that almost will almost certainly end up unfit for purpose if experience is anything to go by.

Means testing can actually be unfair. It is well known that large numbers of needy people tend to miss out on such benefits; they either don't know about them or that they are eligible to apply for them. Perhaps more importantly they are reluctant to claim them. Underclaiming can result not only in increasing poor health, social exclusion etc but also in increased costs to the NHS for treating both the physical and mental health results of such things as poor diet, lack of heating and social interaction.

Means testing always hurts those in the middle – neither rich or very poor. There is inevitably a cut off point; and some of those whose income is above but very close to that point and would benefit are excluded.

It will be those in their 20s, 30s and 40s right now who lose out if it was brought in, they are the ones who will not benefit from any protection measures that end up being used for those nearing or already in retirement.

This is a political choice about spending priorities. It is also a matter of morality and social responsibility.

UK public spending on pensioner benefits will increase significantly over the medium to long term, the IMF has warned. Steven Cameron, pensions director at Aegon, said: “The ageing population is creating concerns not just over the future affordability of the state pension but of how to meet increasing funding pressures on the NHS and to pay for spiralling social care costs. “Of all the suggested solutions put forward by the IMF, the most contentious is making state pensions means tested, which could mean those with earnings or assets above a certain level no longer qualify, even if they have paid national insurance throughout their working life.”

Peter Barnard's view is “One of the great strengths of universal benefits is that they create a sense of solidarity and shared understanding. Means tested benefits create the opposite, divisions and misunderstanding”

Points arising from the discussion

- Most of us felt that means testing should not be applied to the state pension, for the reasons already stated.
- The triple lock is currently too generous for many pensioners and too costly for the government. The consensus was that the pension increase should be aligned to the increase in the average wage.
- Winter fuel payments and free bus passes could also be abandoned except for people receiving Pension Credits. Several of us already pass these payments on to charities anyway.

Judith

[Return to Contents](#)

Gentle Cycling Group

Co-ordinator : Sue Creeden
01455 557888

Our ride, scheduled for 11th October was cancelled, again due to a forecast of rain and strong winds. When the day came, however, it was a bit breezy with just a short shower at 10.00 a.m. but otherwise a fine morning. Very irritating!

A week later it was very windy again but fortunately dry. As it was half-term, just four of us braved it this time. Not deterred, we set off from the Elms, Lutterworth and cycled across the motorway, down the lane to Misterton and the along the footpath to Walcote. Crossing over the A4304, we pedalled on to South Kilworth. The next mile is rather hilly and it turned out it was our leader who was the least fit! After recovering at the top, we turned down to Stanford Hall and then right back up to Swinford. Climbing again we cycled to Swinford corner and took a right into Swinford Road and back to the Elms. This 11.5-mile route has some lovely views and the lanes are very quiet. A delightful morning topped off with coffee in a sheltered spot outside.

The next outing will be on **Wednesday 8th November**. If you fancy joining the ride, we will be very pleased to see you. Electric bikes welcome. Just email Paula Beadle via the Wycliffe Lutterworth U3A email address:
thewycliffelutterworthu3a@gmail.com

Advance Notice:

The ride in December has been brought forward to Wednesday 6th December so as not to clash with the Walking Group. Details to follow.

Sue

[Return to Contents](#)

Coniston Walking Holiday 9-13 October 2023

Wish You'd Been There?

Over 40 of us headed to Monk Coniston Hotel in the Lake District for the annual walking holiday. It was my first time organising it. Before it had even started I felt I would be due another holiday straight afterwards! It's quite a lot of responsibility and I did feel it. So I was expecting it would be quite a stressful week, but actually it turned out to be fine. My thanks to everyone for being so supportive and allowing me to enjoy it with you all. So much so that I am already arranging the next one!

Our first walk on the Tuesday took us to Tarn Hows and onto Black Craggs. We had mixed weather and apart from my occasional divergence from the planned route we all made it safely home.

My particular thanks to the medical team of Jo and Judy for treating Stephen when his back inadvertently "went". Thanks also to the emergency ambulance service provided by Geoff and Eddie abled coordinated by Andy back at base camp!

For any readers who have not been on one of our walking holidays, please don't be put off by this event. 'We never leave anyone behind' is in our dna!

The second walk took us through some lovely rolling slopes to Miner's Bridge and for the more energetic to members we continued to Crowberry Haws. There was the reward of brilliant a blue sky and sunshine for most of the day. There are some photos to show what absent friends missed.

One of my fondest memories will be the quiz nights. If I'd realised I had to lead quizzes I might not have offered to take over from George. But rest assured I shall be fully prepared for next May's quizzes and guarantee they will even worse than this year!

After Friday breakfast "parting was such sweet sorrow". It had been a thoroughly satisfying holiday.

Lily took me off to Lakeland to buy an air fryer. I am now officially a Ninja! I never realised a shop could stock so many essential items. It seemed quite a few of our group had also popped into Lakeland.

I look forward to our next holiday in Malham Cove next May.

Hamish











Coniston Holiday Photo Caption Competition



Entries to be sent to to: wlu3asecretary@gmail.com

[Return to Contents](#)

Can Poetry and Technology Mix?

I was preparing for our poetry group meeting and decided to see if technology and poetry mix well. Our topic was 'Cheerfulness'.

So I asked the Artificial Intelligence app ChatGPT to write a poem entitled "The Happiness of Ageing".

Not unexpectedly the app automatically reverted to the American spelling of Ageing!

I hope you enjoy the resulting poem as much as I did. It seems there is great joy in ageing!

The Happiness of Aging

by ChatGPT

In aging's embrace, a wisdom grows,
As life's river steadily onward flows.
Each silver strand, a story it bestows,
The happiness of aging, life's grand prose

With wrinkles etched like paths well-trod,
In aging, we find a deeper nod
To simple joys, to moments awed,
A happiness in aging, life's sweet applaud.

The clock may tick with measured pace,
Yet in these years, we find our grace.
The wisdom earned in life's embrace,
A treasure found in aging's space.

In memories stored, like vintage wine,
The laughter, tears, the grand design,
The happiness of aging, truly fine,
As time's tapestry begins to shine.

So let us cherish the twilight's glow,
As gracefully through the years we go.
In aging's light, a happiness does show,
Life's masterpiece, a vibrant afterglow.

Footnote

The whole subject and development of AI is commanding a great deal of media attention at the moment. The philosophical, political and moral implications are clearly of great importance.

Personally I find it fascinating but also very worrying. I'm not sure how it will affect our lives, but it's certainly going to have a huge impact on our children's.

Hamish

French Cafe

26 October 2023

We chatted about our week and confirmed that there will be a film, *Bienvenue chez les Ch'tis*, at Pearl and Tony's on 23 November. At that time Sue will collect your menu choices and deposits, if you have not already given them, for the Christmas meal at the Wycliffe Rooms on Thursday, 14 December.

We looked at an article about Montmourillon, a "book village".

The next meeting will be on 25 January 2024.

Sue

[Return to Contents](#)

4th Wednesday Walking Group – October 2023 Walk Report

An excellent turnout of 25 walkers set off for Lesley and Mike Chapman`s walk from The Chequers at Swinford. Looking through my records I have found that the group last did this walk in November 2016 led by George Robertson. I was tempted to just do some minor changes and submit that report for this walk. However, the story about a dog on the walk that disappeared into a wood chasing some pheasants didn't happen this time and I wasn't quite sure if it was the same route. So, I decided to continue writing this report.

It was quite misty as we drove to Swinford, and a bit on the chilly side, but the mist quickly lifted and it eventually turned out to be a bright morning. Importantly, it wasn't raining. Mike and Lesley totally confused me by starting the walk in the reverse direction to that detailed in the notice for the walk. We headed off towards the A14 across field paths. Reaching the A14 we walked parallel with it on a footpath across fields that hadn't seen many walkers recently. Thankfully the recent heavy rain had not made it soggy and also, 7 years on, the trees and bushes had grown to give some screening from the road noise. Gradually we moved away from the road and we soon lost the road roar to eventually reach a lane to join the Shakespeare's Avon Way. We walked along the lane before turning off the Way onto a path to reach a dismantled railway line where we stopped for a break. Fortified we headed off along a path towards Stanford Hall that, luckily, was not closed because a notice advised that a few days later it was going to be for 2 days for coppicing (for the horse riders and not for walkers I am sure). Soon we could see in the distance, across the field, the monument to remember the ill-fated aviator Percy Pilcher.

In 1899, Pilcher had produced a motor-driven triplane, which he planned to test at Stanford Hall. However, the attempt was delayed by mechanical problems. Not to disappoint the invited audience he substituted the flight with his unpowered flying machine, the Hawk. Unfortunately, it suffered structural failure in mid-air and he was fatally injured when it crashed to the ground. Sadly, leaving his powered aircraft untested.

We then continued on along a lane before leaving it to take the footpath which went behind Stanford Hall across several fields to arrive back in Swinford.

It was a very enjoyable walk and we thank Lesley and Mike for all their efforts in planning, recceing and leading it and also for organising the lunch that quite a few of the walkers stayed for afterwards at The Chequers.

Peter Creeden

4th Wednesday Walking Group – November Walk

Co-ordinators:- Sue and Peter Creeden (Please use your U3A website if you need to contact us)

Wednesday 22 November 2023

Walk Organiser: George Robertson. 07986827270

Meeting Point For Lifts:- Meet at the start

Walk Meet and Departure Point and time: The Elms, Lutterworth LE17 4HB
Walk start 10.00am. Toilets will not be available.

Route and Distance:- :- Walk starts from The Elms and goes up through the town and then under the motorway to Walcote via Misterton. We will return to Misterton and then across field paths to return to The Elms. Less than 5 miles and 2 stiles

Lunch Arrangements: We will eat in The Elms. I will give them an approx. number of diners, and if you let me know in advance that you intend to come my approx. number will be more accurate. They do a Lunch Menu with dishes at under £9.00 with a dessert for an additional £2.25. Carvery is available starting at £8.29.

Peter

[Return to Contents](#)

4th Wednesday Walking Group – Advance Notice Walk

Co-ordinators:- Sue and Peter Creeden (Please use your U3A website if you need to contact us)

ADVANCE NOTICE OF A DECEMBER WALK FOR YOUR DIARY

Wednesday 13 December 2023

The walk, as you may have noticed, is **NOT** on the normally scheduled 4th Wednesday of the month. We thought it might clash with your Christmas arrangements, So, to avoid you getting walk withdrawal symptoms as the next scheduled walk would not be until the End of January 24, we have slipped this walk in.

Walk Organisers: Sue & Peter Creeden

Meeting Point For Lifts:- Lutterworth Recreation Ground car park at **09.15am** to leave at **09.20am**.

Start Point and Time:- Bradgate Park, Newtown Linford car park [LE6 0HB]. Car park charges £3.30 for 3 hours/ £4.50 Full day. Toilets available. Start of walk 10:00am.

Directions to start:- :- M1 north to Junction 22. Right onto the A50 until the first roundabout then left to Newton Linford (along Markfield Lane. At the T junction turn right (onto Main Street) eventually crossing a small roundabout. Shortly after then passing All Saints Church look for a well disguised turning in the car park

Route and Distance:- :- An undulating route around the park. Approx 5 miles and no stiles

Lunch Arrangements: There are none. Sorry, but there are plenty of places around.

ESTG October Event- Visit to Coventry Transport Museum

For Octobers event 13 ESTG Members visited the Transport Museum in Coventry which shows the transitioning history of manufacturing in Coventry from Bicycles, Velocipedes, Carriages and finally to manufacturing Motorcycles, Cars and Buses.

The Museum is home to the **world's largest collection of British road transport in public ownership.**

The Museum is laid out as a journey through time - 19th Century streets lead through to modern-day **Technological Development of Electric vehicles for which Coventry is now recognised as a world leader.**

Our designated guide Matthew, took us on a 60min tour of the museum and explained the history of the museum and its aims for the future- that being to maintain examples of the Industrial history of Coventry and the surrounding areas for future generations to appreciate.

Museum Exhibits start with the first bicycles made around the early 1800s then on through Velocipedes, carriages and finally to cars and buses.

The 'Blitz Experience' allows the visitor to view rare cine footage of the first car production factories and witness their wartime destruction in 1940 along with a large amount of the domestic housing in Coventry which is still evident today with more modern houses filling bombed out gaps in terraced roads.

The visitor can see from continuing through the predetermined route, the rise and fall of the city's largest industry that being car and van manufacturing.

Additionally tableau's highlights the disastrous effect of the Unions on car manufacture in the 70s and early 80s in their attempt to halt the decline of their industry, a situation mainly due to its poor quality control and boring vehicles made worse with the ever increasing sales of higher quality more desirable imports from the likes of Japan, and the Pacific rim.

There are too many fine exhibits to mention here however there are a couple of notable exceptions, one being **the world's fastest car - Thrust SSC which achieved 763.035MPH powered by 2 Rolls Royce Spey Jet Engines !** and **5 Star Field General Montgomery's original staff car** that he used in the North Africa Campaign and which was specially strengthened so that "Monty" was able to stand on the running boards elevated and so be visible when speaking to the troops.

I have included some photos from the day but both above text and pics do not show what a great museum this really is.

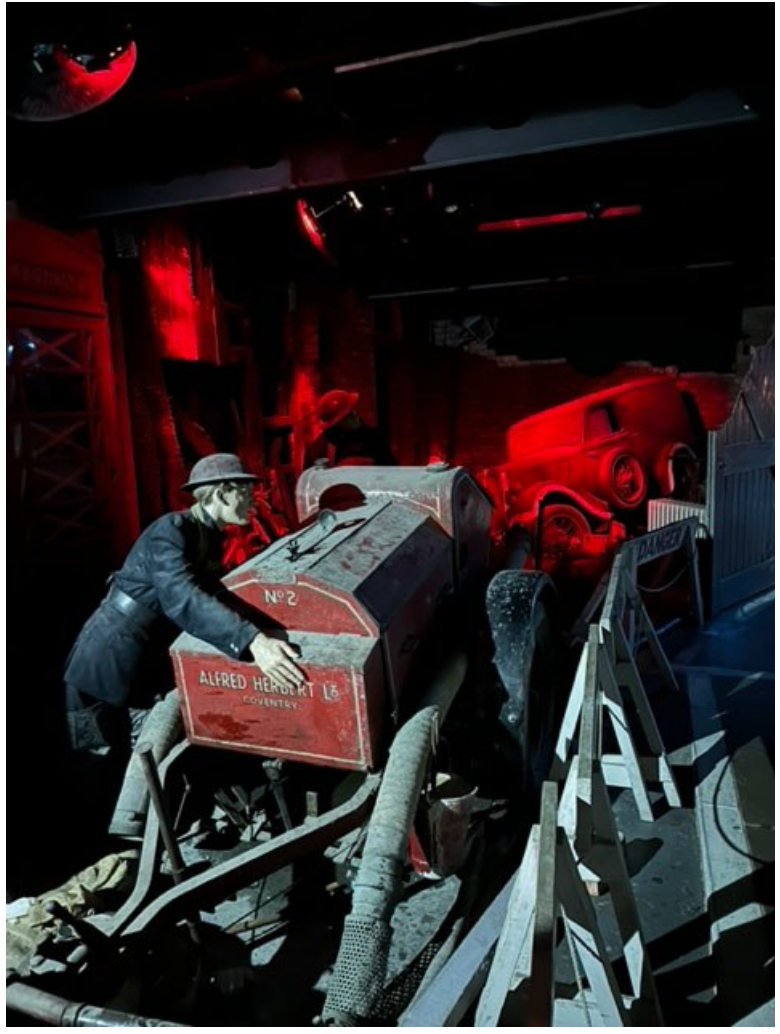
Tony Allen who had organised this visit for the group could not be with us on the day but **Paul Butler** kindly stepped in to ensure everything went smoothly so our thanks go to both of them in helping make such a great visit.

Chris Ridley

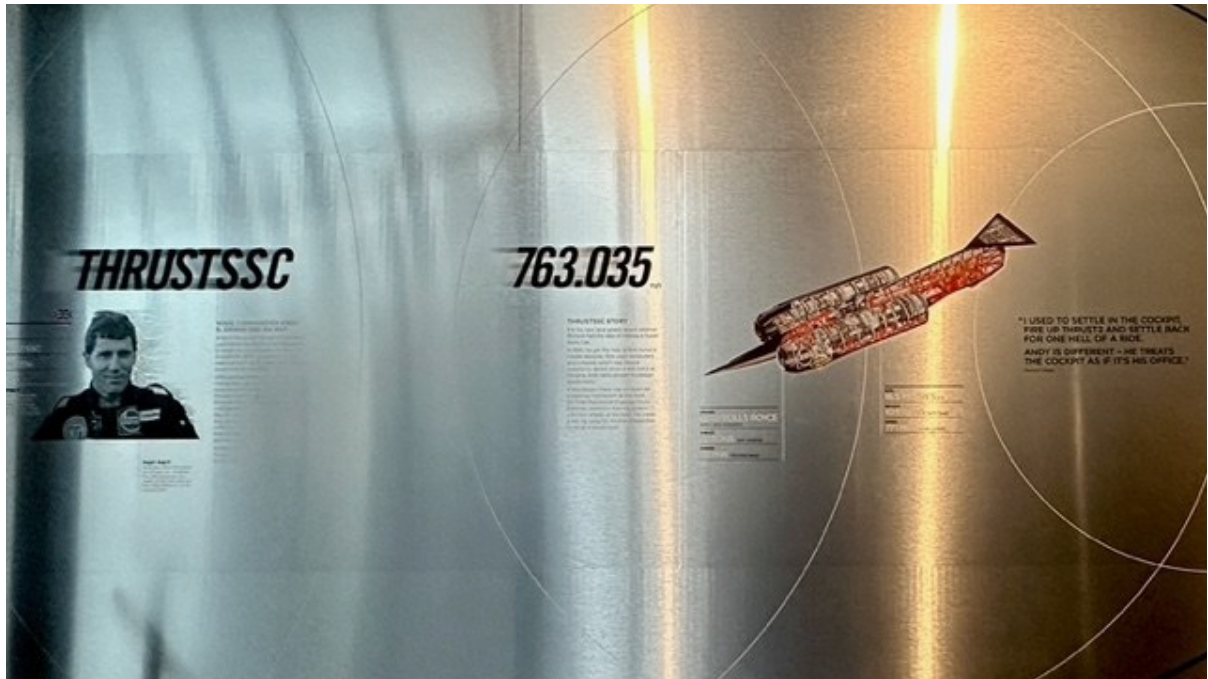












U3A Snail's Walking Group

Friday 17th November – Broughton Astley and Sutton in the Elms

Jenny and Valerie are organizing the next walk – see below for the details.



Meeting Point

The Snail's Pace Walk on Friday 17th November will be around Broughton Astley and Sutton in the Elms, meeting at 10.45am at the White Horse in Broughton Astley, 32 Station Road, Broughton Astley, LE96PT.

As Broughton Astley is local, no directions have been provided.

Lunch

We will meet at the White Horse pub at 10.45am to preorder lunch. You can look at the menu on the day or the menu is available on line. **The Christmas menu will also be available:**

<https://www.whitehorsepubbroughtonastley.co.uk/menus/>

Walking Route

Start at 11am on paths through Broughton Astley to Sutton in the Elms and then we will pass the Sutton Auction House and return through fields and the village to the White Horse.

Please wear footwear suitable for field walking . (Approx. 3 miles)

Contact

If you would like to come please contact Valerie Connelly **before Monday 13th November** on:

07463 797491 or email valerieconnelly@rocketmail.com

Snail's Pace Walking Group - New Walkers Welcome

We are a very friendly group of people who enjoy a bit of exercise, the opportunity to socialise and a pub lunch afterwards - optional, of course!

Our walks take place on the third Friday of the month, starting at 11.00am. The walks are 3 miles or under, as a guide, and we try to avoid stiles that require a climb!

If you want to come along, you will be most welcome. Just get in touch with me on 07724 124094.

Best wishes, Mandy Cutler.

[Return to Contents](#)

U3A History Group Report - October 2023

Then and Now

Our topic this month was 'Then and Now', a look at Lutterworth as it is today and finding out what used to be in place on that spot. Viv had taken photos from the precise location of some of the old pictures of the town and we started with a light hearted quiz of 'Now' pictures to try to work out what might have been there in earlier times. This generated a lot of discussion! Some places were only recently altered and we really should have easily found the answers but we discovered it was actually surprisingly easy to forget!

Afterwards, Viv's presentation showed us old pictures of those sites showing how it used to be. These jogged quite a few memories, from the many garages where we took our cars to be mended to the various shops and shopkeepers we remembered. Many, though, were historic views that have been long forgotten and well before our time. One very striking thing was the large number of shops in the town in the 19th and early 20th century. It must have been a very prosperous town and certainly a shoppers' delight. It was interesting to compare the twin images and to imagine what life must have been like for previous residents.

To finish off our meeting the group had another chance to look at the Terrier map of Lutterworth in 1509 as we have had several new members who haven't seen it. This again highlights aspects of continuity even from over 500 years ago. The street plan is the same and many of the names continue.

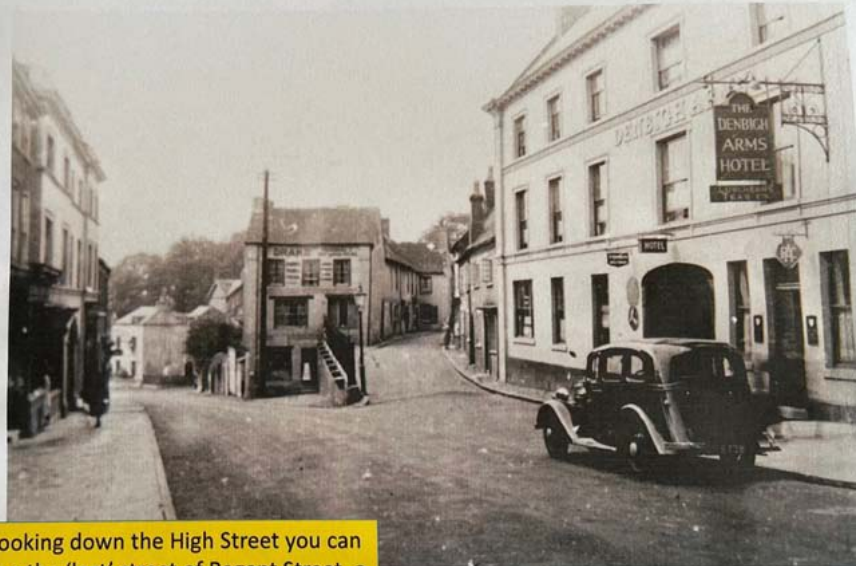
It was another lively meeting full of discussion and interesting snippets of local knowledge. I sometimes think we should write a book!

Our next meeting

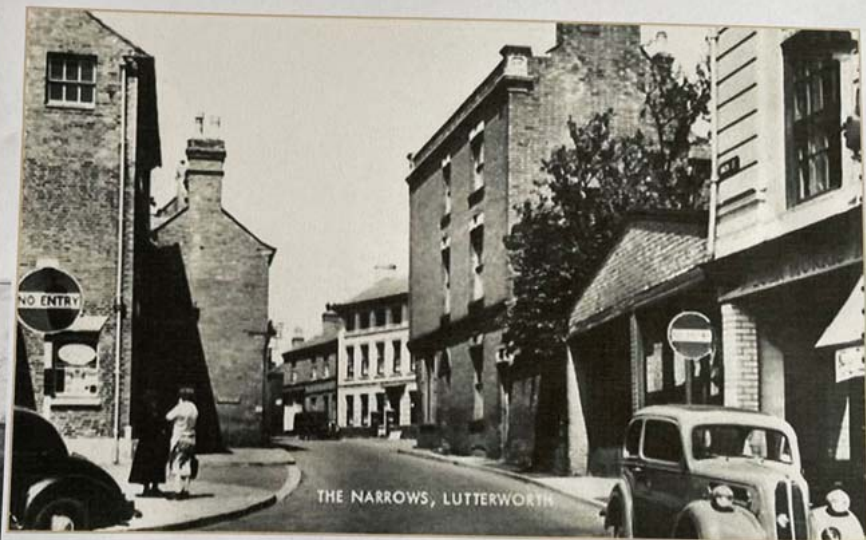
This will be on Tuesday November 7 at Ashby Parva village Hall from 2pm til 4pm as usual.

Sheila Eggleton will be presenting the topic for the afternoon this time. Her theme is, 'Black History'. There has been quite a lot in the media about this recently as September was Black History month. It promises to be something different and thought provoking.

Viv



Looking down the High Street you can see the 'lost' street of Regent Street, a place full of shops and pubs. Under the horses, the old town jail is concealed.



The Narrows and the Market. This built up area on the right is now our open market place

'With thanks to Derek Day, who has published many interesting old pictures on Facebook.'

r

The path down to the miller's house survives



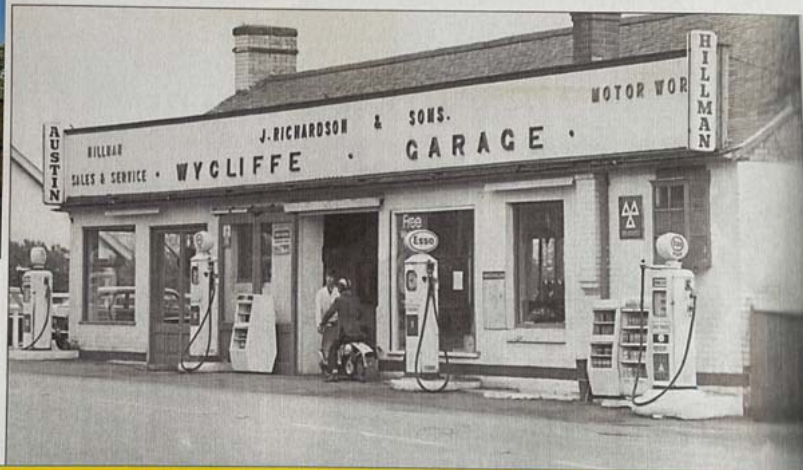
Series No. 132.

Lutterworth Windmill.

Lutterworth subscription windmill on Leicester Rd stood where the Ford Garage is now.



q



The arrival of Safeway, now Morrisons, led to the relocation of the Wycliffe garage, first to a new build on the corner of George St (now the library) and then to grander premises on Leicester Road (where the flats are now). The supermarket brought about the loss of several houses and fine old trees.

'With thanks to Derek Day, who has published many interesting old pictures on Facebook.'

Photography Group - October 2023 report

October's picture topic was "Autumn Colour" chosen as there is always lots of colour in our trees and hedgerows, in the UK in October. Well not this year as it has been difficult to find the intensity of colour for which we were hoping. I am not sure what part of the yearly weather pattern creates the colour, but it is a bit later this year. Fortunately, there have been a bumper crop of berries which many of our members spotted. If the old adage about the quantity of berries is a harbinger of the severity of winter, we better dig out our thermals and get the snow shovel out of the shed.

However, our members scoured the UK for autumn colour and have produced some great pictures which you can see in the next couple of weeks on the gallery page on the Wycliffe Lutterworth u3a website.

After looking at our monthly pictures we had a discussion of how to "age" a modern picture. Several methods were looked at, sepia tones, antique yellowing, light fading at the edges, adding dust and scratches, all fairly simple with photo editing software.

The discussion was how far should we go with these effects, and we concluded that it was up to the individual, depending on how the picture was going to be used. We considered why we should age a picture and it was "because we can" for curiosity and a bit of fun. Obviously, if we want the picture to have the period look, we also have to remove all the modern items that we now see around our countryside and towns, such as powerlines, road signs and markings, telephone cabinets and lampposts.

Our November topic is "***Before and After,***" where we will choose a subject that can change within a brief period of time. Wilting flowers, melting ice cream, a frozen lolly. We hope to get two pictures of the subject in both states, and we will view the "after" and guess what the "before" looked like.

Our next will be on Friday 24th November 2023, 10.00 am, in the Ullesthorpe Village Hall.

As usual, our meetings are open to all Wycliffe Lutterworth U3A members as regulars and other U3A members as guests. If you would like more information, e-mail us at the address below.

wlu3acamera@outlook.com.

Michael Bates



Penny Ross



Ruth Bones



Poetry Group Report

The topic for October was “Something Cheerful” which acted as a counter to last month’s topic of “Refuge’ which turned out to be somewhat gloomy!

There were several from Roger McGough who always manages to bring a smile or laughter. Philip Larkin’s “Cut Grass” and “Coming” were something of a surprise as he’s not known for cheerful poems.

Kit Wright also featured with “A Love song from Tooting” and the almost musical “Red Boots On”.

Elvis McGonagall’s “By George” is worth a read. The first line is a gem:
“Once more unto the breach, dear Morris Dancers”

There’s a separate article in the bulletin with an example of a poem written using Artificial Intelligence.

The next meeting is on the 30th November and our topic will be “Places”

Hamish

Committee Members

<u>Office</u>	<u>Name</u>
Chairperson	Colin Beadle
Membership Secretary.....	Andy Hetherington
Secretary	Hamish Paterson
Treasurer.....	Nigel Bones
Groups Co-ordinator.....	Colin Beadle
Speaker Finder.....	Andrea Nichol
Minutes Secretary.....	Anne Dean
Beacon Administrator.....	Andy Hetherington
Committee Member.....	Ruth Bones
Committee Member.....	Sue Poulter
Committee Member.....	Michael Bates
Committee Member	Sally Wood

Note:

Any committee member can be contacted via our email address:

thewycliffelutterworthu3a@gmail.com

Articles, reports, news items etc. for inclusion in the next bulletin should be sent to the editor:

trudyhaddon.rylands@gmail.com

Pictures to be sent as jpgs

Deadline: last day of the month.