

AUGUST MONTHLY MEETING

THURSDAY 10/08/2023

PICNIC AT MISTERTON HALL



By the kind permission of Mrs Craven – our monthly meeting for August is being held in the gardens of **Misterton Hall, Lutterworth LE17 4JP.**

Event scheduled for – **Noon to 14:00 hrs.** Suggest arrival from **11:45 hrs**

The format will follow that of recent years – please bring your own rugs, tables, chairs’ etc. plus of course a picnic and liquid refreshments.

Parking will be close to the Hall - but please be aware you will need to carry your items to the garden.

Please use the main entrance to Misterton Hall. There will be a committee member to greet you and direct you to the parking area. **Please** make sure you **sign in** (look out for a green and white gazebo).

We plan to have a number of “lawn” games available – croquet, bowls etc. there will be soothing background music, plus the gardens will be available to explore should you so wish.

WC facilities will be available on site.

This event is of course very dependent upon the British weather!!

A close eye will be kept on weather forecasts prior to this event but the final decision will only be made on the day itself.

An email will be circulated to all members at approximately 09:00 hrs on Thursday 10/08/2023 to advise if the event is progressing or cancelled. **Please check your emails on the day.**

Looking forward to seeing you there.

Regards

Colin Beadle (Chairperson)

Table of Contents

<u>Lively Discussion</u>	4
<u>Gentle Cycling Group</u>	10
<u>U3A Garden Group</u>	11
<u>History Group</u>	14
<u>History Group Report for June 2023</u>	18
<u>ESTG Event -Two Talks 'Submarine in a hanger' and 'Unusual Railways'</u>	19
<u>Snail's Walking Group</u>	22
<u>Poetry Group</u>	24
<u>French Cafe</u>	24
<u>Pub Lunches Group</u>	25
<u>Ethnic Dining Group</u>	26
<u>Photography Group July 2023 Report</u>	27
<u>Stamps</u>	30
<u>Committee Members</u>	31

Lively Discussion

Meeting held on 10th July 2023

How much will it cost the UK to reach Net Zero?

What is Net Zero? Put simply Net Zero means cutting greenhouse gas emissions to as close to zero as possible, with any remaining emissions re-absorbed from the atmosphere, by oceans and forests for instance.

Current UK Energy Mix%

Gas 38.5%

Wind 26.8%

Nuclear 15.5%

Imports through interconnectors 5.5%

Biomass 5.2% (using imported pellets)

Hydro 1.8%

Storage 0.9%

Cost to the UK of going green

2023 1.1% GDP

2050 3.3% GDP

End of the century 7.4% GDP

In a July 2021 report on fiscal risks, the Office for Budget Responsibility estimated a net cost of the UK reaching net zero by 2050 to be £321bn, or just over £10bn per year. This is made up of around £1.4trn in costs, offset by around £1.1trn in savings.¹ Sept 2021

What is the net zero target for 2035 UK?

Decarbonised electricity by 2035 will fully open the path to the full decarbonisation of other sectors, like transport, industry and heat, through the adoption of key technologies like electric vehicles and heat pumps. Achievement of the UK's emissions targets rests on this key goal.

Dated 9 Mar 2023

How many UK and global companies are net actually zero?

As of 31 March 2021, 30 of the UK's FTSE 100 companies have signed up to the United Nation's [Race to Zero](#) campaign – the largest ever global alliance committed to achieving net zero carbon emissions by 2050 at the latest, backed with science-based targets, with many opting to go even faster. Today's milestone means pledges have doubled in the past 5 months, with companies including AstraZeneca, BT Group, Sainsbury's, Rolls Royce, Barratts, Legal & General, Aviva, Severn Trent and Unilever.

Globally, more than 2,000 companies of all sizes have joined the UNFCCC Race to Zero so far, and around a third of these are British businesses from across sectors such as transport, technology and finance - putting the UK at the front of the pack internationally. We wonder not only how many UK businesses there are in total, but also how many world-wide. 2000 world-wide doesn't seem many with the shortening time scale, having just had the hottest month on record in June.

The government says: Businesses taking action on climate is vitally important in achieving the UK's goals to tackle climate change by 2050, from cutting emissions in their supply chains to opting for sustainable business practices. The government has put in place measures that encourage businesses to reduce their emissions, including last year appointing [Andrew Griffith](#) as Net Zero Business Champion to spur companies to make ambitious climate targets.

How likely is it for the UK to reach these targets and possible restraints?

1. The UK has spent over 30 years considering a third runway at Heathrow and achieved nothing so far! HS2 has been heavily cut back with increased cost forecast and missed deadlines. We're not good at Action
2. We have no money and have considerable debt
3. Governments change constantly and provide no stability for investors
4. Our politicians are generally out of their depth whatever party
5. The UK's net zero contribution is minuscule compared to the rest of the world

Public reaction to net zero policies concerning Rental Property

The rules being proposed:

Key to the Government's plan is the use of targets via the EPC ratings. Landlords will be blocked from letting properties unless they upgrade them to meet net zero energy efficiency targets by 2028. The Telegraph estimates this will reduce rental stock by 15% at a time when stocks are already unable to meet demand! The Government has not officially confirmed the dates, but its previously published proposals were for newly let properties to achieve a C rating by 2025 and for existing lets to meet the same standard by 2028. It is understood that landlords could face fines of up to £30,000 if they breach these rules.

Since 2020, all newly-let properties have been required to have a minimum EPC rating of E, unless they have an exemption.

Landlords can register an exemption if they have spent £3,500 on their properties [and still have not reached an E rating](#). Millions of homes have EPC ratings below C

Impact extends to commercial properties

Other property investors are also expected to take a [financial hit that will drag down prices in the commercial sector](#).

New laws that came into force on April 1 ban landlords from renting offices with an energy efficiency rating of E or below.

The minimum E rating that came into force on Saturday has left around 8pc of all commercial stock obsolete, according to BNP Paribas Real Estate. Millions of commercial spaces will need upgrading.

Other Countries

CHINA

In comparison China built 100 new airports in less than 3 years!

Going round in circles - Beijing

In 2020 Beijing opened its **eighth** ring road 1200 kilometres in circumference giving the capital the world's largest number of ring roads.

In 2018 Beijing opened its seventh orbital highway. This road is 1,000 kilometres in circumference – equivalent to the distance between Paris and Barcelona. In fact, it is so long that 90% of it actually runs through the surrounding province of Hebei. Unlike Beijing's other ring roads, the aim is not to service the capital but to connect surrounding cities which form part of the larger Beijing-Tianjin-Hebei economic zone. A three-year transport development plan released this month aims to reduce travel time between Beijing's satellite cities and their satellite towns to under an hour.

The southwestern city of Chengdu also has six ring roads!

By comparison Moscow and Delhi have two and London only has one circular motorway – the infamous M25 (sometimes dubbed 'Europe's longest car Park' thanks to its rush hour congestion).

India

Target year – India aims to reach net zero by 2070 - we think future generations will be badly impacted. The target covers all key sectors of their economy.

Everyone in the group was pessimistic about the government's ability or even will to achieve the targets by 2050. No politician, party or department has shown themselves to be capable of devising a plan and working through to the conclusion. Yougov polls with MPs and their constituents show that 71% of the public supports on-shore wind farms, whereas their MPs thought 50% of their constituents would oppose them. With politicians so out of touch with the public and always opposing other parties' proposals very little gets done. Contrast this attitude with that of the German government who have had mainly coalitions since the end of the war. They are much better at managing such projects. They have Proportional Representation (PR) during elections which means members of parliament have to co-operate to govern the country. Our first past the post system means that many who would vote Green because they are so concerned about the climate situation, never get the chance. Their choice usually only includes 2 or 3 main party candidates from which to choose.

If we were under the illusion that our government cares about the environment there is one word to say – SEWAGE!

We know that delays increase costs, but if we don't do something now our grandchildren and great grandchildren will pay much higher costs to fix the damage. Government should ask themselves what is the human cost of doing nothing? Keir Starmer seems to be rowing back on green energy and the Conservatives are sending mixed messages with much talk but little real action. Rishi Sunak seems to be dithering over whether or not to get our scientists back into Horizon, the Europe-wide scientific organisation with an £85 billion project, – get on with it Rishi!

TRANSPORT

Unfortunately the answer to our transport problems is not electric vehicles – YET! The challenges to be solved include supply of metals for the batteries, lack of charging points, vehicle weight affecting roads, bridges, and carparks, more serious accidents when a collision includes a much heavier vehicle, rubber pollution as the tyres shed much more rubber than petrol and diesel vehicles and vehicle prices which many cannot afford. These things will improve in time as happened with mobile phones. However until that happens a cohesive, reasonably priced public transport system would give people the option to be greener now.

ENERGY

Another point brought up was why are new developments both housing and business not required to include solar panels? When you drive down the roads in South Korea you see solar panels in the middle of the road with crops growing beneath them.

Air source heat pumps cost around £10 - £11K to install now and Octopus Energy are saying this is likely to fall to about £5,500 within 18 months as more households switch to them. However, if you need a new gas boiler which costs around £1,200 most people will choose that especially with the current cost of living crisis. Government should be legislating now to enable effective planning permission to be given to those who can afford heat pumps.

RECYCLING

Much could be saved if recycling was the same across the UK. Changes to what can be included and collecting these smaller amounts adds to costs.

One person thought that Government dithering could be solved by AI (artificial intelligence) since the emotion and politics would be removed from the Net Zero considerations and plans. Although there have been some AI scare stories this too will improve and would give a logical and workable basis for achievement of Net Zero.

Our plea to all politicians is:

You must lead and organize. Individuals cannot do this alone and need co-ordination. Floods, drought, extreme temperatures and people fleeing their countries to feed themselves and get away from war can only be solved by non-partisan leadership.

Visitors welcome, please contact Dot Barnard dot.barnard@uwclub.net

01455 208190

We meet on the second Monday morning of each month at 10.30am.

2023 TOPICS

- July – How much will it cost the UK to reach Net Zero?
- August – What is the value of pets to society?
- September – TBA

[Return to Contents](#)

Gentle Cycling Group

Co-ordinator: Sue Creeden
01455 557888

We only managed one ride in July, mainly due to members enjoying grandchildren in the school holidays. I have to say though, this one ride turned out to be rather eventful!

Just four ladies met at Moretons in Gilmorton and, before we even started, we discovered the road we planned to take out of the village was closed. However, we were assured by the locals we would be able to get through, so off we set. About half a mile up the road, oops our dizzy leader realised she had left her backpack on the pavement at the start. Fortunately, it was still there and so off we set again. The roadworks turned out to be quite extensive. However, the workmen happily waved us through and we picked our way round holes, machines, and lorries on foot. We were soon back on our bikes and all was very pleasant as we cycled down to Ashby Magna, turned left and into Holt Lane. This is a lovely quiet lane so we were pedalling along relaxed and chatting. Then suddenly one member did a Mark Cavendish and was on the ground. Not quite sure what happened but she had bumped her head and was rather dazed. (Saved from anything more serious by her helmet). We all felt it best for her not to continue so we called the emergency services – well Paula's Husband Colin to be more precise! – who kindly drove her and her bike home. Thankfully, apart from suffering a sore shoulder, she recovered quickly and will be out riding with us again.

As the wind was making cycling extremely challenging and we were now a little behind schedule, the remaining three of us elected to shorten our ride, return to Ashby Magna, turn right down to Peatling Parva and back up Mill Lane to Gilmorton where we enjoyed a relaxing coffee in the garden at Moretons.

The next ride will be on **Wednesday 9th August**. If you fancy joining us, we will be very pleased to see you. Electric bikes welcome. Just email me - sueandpeter.creeden@taltalk.net or call me on 01455 557888.

[Return to Contents](#)

U3A Garden Group

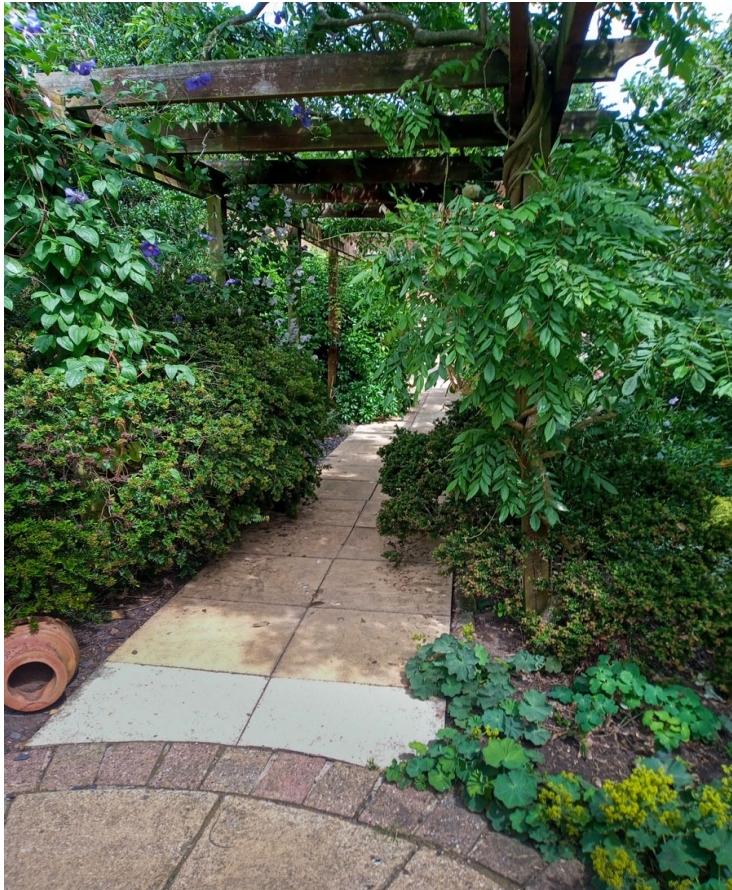
Trip to Barracca Gardens, Earl Shilton, on Monday 3rd July



Twenty-five of us enjoyed an afternoon out at Barracca, a NGS garden in Earl Shilton. The weather forecast was for heavy rain and we had been watching the sky anxiously, but we were lucky: it remained dry and we even had some sunshine. Our hostess, Sue, was both welcoming and informative.

Barracca is part of the old gardens owned by the Cotton family who used to open their 9 acre garden to the public in the 1920s. It is now a 1 acre garden which has developed over the last 10 years.

A series of paths take you round all the different areas, including a silver birch walk; a tranquil wildlife pond with seating and bordered by a dramatic bed of different coloured astilbes; an apple tree garden; acers, dogwoods and lawns surrounded with herbaceous plants and shrubs.



In the side extension there are shrubs, perennials and bamboo trees. A hidden path along the side of the house leads to a utility garden with greenhouses, herbs and vegetables, fruit cages and a second large patio area.





We finished the visit on the main patio, surrounded by climbing roses and wisteria, enjoying the tea and delicious cakes provided by Sue and her two friends.

A very enjoyable visit.

Daryl Graham

[Return to Contents](#)

History Group

Report for the History Group, July 2023

Our visit to Belgrave Hall was very interesting and we had a warm welcome from the staff and volunteers who looked after us. Belgrave Hall is an attractive Queen Anne style mansion set in lovely gardens. The house was built in 1713 by Edmund Cradock, who was a wealthy hosiery merchant, looking for a grand house to reflect his status but also near enough to travel to his work in Leicester. The Hall's original main gates led out to the highway to the town. At the time, Belgrave was a separate village, and its semi-rural surroundings were perfect for Cradock's needs. Later the estate was enlarged and there were alterations and extensions to the house, but the elegance of the style was retained.

It has been owned by Leicester council since 1936 but for many years it was a private house, and our friendly and knowledgeable guide introduced us to the various families who have lived there over the years as she showed us round. These were the Cradocks, the Simons, the Vanns, the Ellis family and the Morleys. All the residents were of similar type; wealthy middling class merchants or industrialists who wished for an elegant lifestyle. Their story also reflects the increasing wealth of Leicester as a textile town during the Industrial revolution.

Inside the rooms, there were story boards and exhibits about the different owners of the house. after the Cradocks. One of the most notable was John Ellis, who is one of Leicester's most famous figures. He brought the first railway to Leicester from the Swannington coalfield to the town in 1833. Later he was involved in the Midland Railway which put Leicester on the national rail network. Ellis was a Quaker and a reformer and, through his position as a town councillor, he was able to initiate many improvements in the town. His daughters were also interesting women. They inherited their father's wealth and they all lived at the hall together after his death in 1862 until 1923 and none married. Each woman was dynamic, forward looking and public spirited and they were very involved in the local community in different ways. Certainly,

they all seemed to have well loved and respected locally. One was an active supporter of women's suffrage, one was a social reformer and a leading figure in the Poor Law (despite being the prevailing view that women should not hold such posts) Unfortunately, one was an invalid but they made sure she could also live a full life and get out as they had a lift put in for her. The last surviving sister Margaret Ellis, died in 1923. It was rather like hearing about characters in a 19thC novel!

After looking around the house, we also visited the stables and outbuildings and had a stroll in the lovely gardens. Some members of Belgrave local history society happened to be there with an exhibition on weddings and many of us enjoyed an interesting chat with them.

Leicester Corporation bought the house for £10,500 in 1936 and turned it into a museum but this was closed in budget cuts in 2012. It's a great loss to Leicester (as was the closure of other museums like Snibston). The house is now used for weddings with occasional open days but many of us felt it was a pity that the house is not more available. The rooms are not 'dressed' with period furniture and ornaments which we thought a shame as it's not always easy to visualise how the place might have looked in its heyday. Apparently, the decision to empty all the rooms when they closed the museum was a deliberate decision by Leicester Museums Service. Despite this, it is well worth a visit and the gardens are delightful.

The Hall is situated just along from the old church of Belgrave which is disused and for sale. We went for a look around the extensive churchyard at the end of our visit. It is full of elaborate and once expensive slate gravestones which tell us that many of the local parishioners in the 18th and 19th century must have been well off. Belgrave was a tiny village in the 18thC, but it expanded considerably in the 18th and 19th centuries. Today, it is a surprising and attractive backwater, surrounded by the modern city of Leicester. If you haven't been, do go and have a look!





Future meetings

1. A reminder that our August meeting is the visit to Broughton Castle on AUGUST 9th. This has been organised by Mandy Cutler
2. The September meeting will be our visit to PACKWOOD HOUSE on WEDNESDAY Sept 6th. If you are going on that you should have paid by now. Remember that NT members do not need to pay for entry. I will be sending a separate email round to everyone on my list for that trip so please check your inbox!
3. **Our October 3rd meeting will be back in Ashby Village Hall.**

History Group Report for June 2023

Lutterworth Inventories

This month we had a visiting speaker. Lynda Hill is a well-known local historian and author who has done extensive research into many of the surviving documents of the town, including the history of Church St and the Lutterworth Union Workhouse.

Lynda gave us a fascinating and interesting insight into the lives of past residents in Lutterworth through the Probate Inventories of their possessions. When someone of a certain status or wealth died their possessions had to be assessed for probate by two neighbours, selected for their reliability and good character. Their assessment of the value of their goods and chattels gave a legal basis to enable probate to be completed and the heirs to inherit. The values were based on the assessors' own knowledge and judgement, so it was by no means an exact science, but the detailed lists of all sorts of items and their values, which were written down as they walked from room to room, have provided Historians with a rich archive. It is possible to reconstruct aspects of how people lived from the things they owned and valued, and it really gets the imagination working, especially wondering what some of the items might have been. Everyone learned some old vocabulary!

Lynda began by asking us to try to think of our own possessions and their value and what this might tell future historians. She introduced us to a selection of local examples of 19thC inventories, setting us several little quizzes and exercises to enable everyone to access the resources and glimpse something of the lives of the people who lived here before us. Lynda is an engaging and knowledgeable speaker and she quickly had us all involved and interested! We were very grateful to Lynda for giving up her time and keeping us both informed and entertained. Everyone really enjoyed the meeting.

A collection generated a donation of £26 for Lutterworth museum.

[Return to Contents](#)

ESTG Event -Two Talks 'Submarine in a hanger' and 'Unusual Railways'

This month we had **2 talks and a quiz** for the group, first talk up was by **Stephen Carter** who told the audience about a **WW2 Submarine** which has been restored, while the second talk was by **David Hanger** who showed examples of the **weird, wacky and wonderfully innovated rail stock over time**.

Submarine in a Seaplane Hanger

Stephen Carter gave us the history and showed a series of pictures that he had taken during his on board visit of **Submarine 'EML *Lembit*' which is housed in a Museum in the old Seaplane hanger on the coast in Tallinn, Estonia.**

Built by Vickers-Armstrong in Barrow in Furness in the UK, together with its sister ship '*Kalev*' it was **launched in 1936** and the pride of the Estonian Navy, EML '*Lembit*' and its sister ship *Kalev* were the only submarines in Estonian naval history.

Both survived the Second World War with quite a few registered sinkings of shipping but spent a long exile in Russia where it was operated by part Estonian/part Russian crew, '*Kalev*', however, was lost after it was disassembled.

***Lembit* is one of the few surviving submarines from before the Second World War and until 2011, it was also the oldest submarine still afloat after a total of 75 years.**

Recently Circa 200 off original Vickers -Armstrong drawings of the construction have been uncovered in Cumbria.

Stephen also organised a quiz loosely based around his talk and the geography which proved to be both challenging and good fun.





Coffee Break -----

Unusual Railways

David Hanger has given numerous talks to the group and is a popular presenter with his knowledge of all things Railways.....

In this talk David gave us lots of examples of the way rail needs have been innovated and adapted over time to make good use of different situations which existed and required some form of transportation.

David's talk also showed the differences between various forms of energy used to power these forms of transport which ranged from Steam, Electric, Diesel and including the unsuccessful Gas Turbine powered trains.

Work had been done over the years to use transport which could access different types of track like buses that could be used on the roads **then be hooked up** to run on the rail or tram systems, most failed after a short while.

David showed various examples tried over the years of rails, track and cable and the systems which help transmit power enabling transport to be used on hills, mountains and inclines some of which are familiar today like Snowden's mountain railway and San Francisco Trams

David's talk covered a huge range of examples and showed the diverse range of engineering expertise this subject covers from its inception in the 1800s through to modern day rail structures.

David will be giving a detailed talk to the group for our ESTG November event on "20yr of Hi-Speed Rail in the UK" where he will expanding on the development of our current system operating + HS2 to come.



My thanks to both Stephen and David for giving the group a most entertaining morning

Chris

[Return to Contents](#)

Snail's Walking Group

August 2023 Walk: Friday 18th August



The walk is around the villages of North and South Kilworth.

We will meet at Kilworth Springs Golf Club LE17 6HJ at 10.45am to order lunch and the walk will start at 11am.

The Walk

The walk starts by going north along the road towards North Kilworth, going through the village and possibly visiting the church. Then circling back towards South Kilworth, walking along paths and fields, and crossing the golf course. Then back to the golf club for lunch.

Parts of the walk are slightly up hill, no stiles. The walk is approximately 3.5 miles with an option for a shorter walk.

Directions from Lutterworth to Kilworth Springs Golf Club, LE17 6HJ

1. Head out of Lutterworth towards Rugby.
2. At the Frank Whittle roundabout take the first left, straight on at the next roundabout over the M1 and on to the A4304 sign posted Mkt. Harborough.
3. Straight on through Walcote village - average speed cameras here!
4. On entering North Kilworth take the first right on to South Kilworth Road.
5. After approx. half a mile Kilworth Springs Golf Club is on the left.
6. There is a very large car park.

Lunch

We will meet at Kilworth Springs Golf Club at 10.45 to order lunch. The Golf Club has a varied bar menu with light bites, salads, chips etc. Here is the link to the menus:

<https://www.kilworthsprings.co.uk/bar-food-drink>

Contact

Please let me know by **Sunday 13th August** if you would like to join us and whether you will be staying for lunch.

Email. smdilks@gmail.com Phone. 07311 287358

Snail's Pace Walking Group

New Walkers Welcome.

We are a very friendly group of people who enjoy a bit of exercise, the opportunity to socialise and a pub lunch afterwards - optional, of course!

Our walks take place on the third Friday of the month, starting at 11.00am. The walks are 3 miles or under, as a guide, and we try to avoid stiles that require a climb!

If you want to come along, you will be most welcome. Just get in touch with me on 07724 124094.

Best wishes, Mandy Cutler

[Return to Contents](#)

Poetry Group

Meeting – July 2023

Instead of a planned topic this month each member brought poems of their choice which they thought we would all enjoy. Selections ranged from Shakespeare to W.H. Auden, Robert Browning, Robert Frost and other classical and vintage poets.

'The Gift of Life' written by Lavinia Green in 1884 was a real eye opener as it described the forerunner of test tube babies at that date, and seemed to be a continuation of practice in the agricultural world.

Humour was provided by Dorothy Parker's 'The Gunman and the Debutante'; 'Warning' by Jenny Joseph; A.S.J. Tessimond's 'The Man in the Bowler Hat'; 'The Logia' by Liz Cashdan and 'The Facetious Carbuncle' by Roger McGough amongst many others.

Some poets' work got us thinking including 'Leisure' by W.H. Davies; 'The Children of Aberfan' by Spike Milligan; 'Lie in the Dark and Listen' by Noel Coward and 'Baby Sitting' by Gillian Clarke.

[The next meeting is on Thursday 25th August and the topic is Towns and Cities.](#)

Dot

French Cafe

The June meeting was cancelled owing to a fairly short notice date for a hospital procedure for Sue. Today we chatted about holidays in general and our personal news. After that we looked at the history of the Canal du Midi. The next meeting will be on 24 August 2023.

Pub Lunches Group

Meeting friends, old and new, to enjoy lunch at a variety of pubs in local villages, some of which we are visiting for the first time, or going back to old favourites! Everyone is welcome to join us, regularly or occasionally. We meet on the first Wednesday of the month.

In September we will be visiting:

The Pig in Muck,

Manor Rd, Claybrooke Magna, Lutterworth LE17 5AY

Wednesday 6th September at 12.30pm.

Taking a bit of a risk with this one, as it is Carvery only on a Wednesday lunchtime – with vegetarian option available.

If you would like to join us, please let us know by **Wednesday 30th August.**

Many thanks

Denise and Geoff Taylor

Email: denisetaylor551@gmail.com Please mark the subject line; Pub Lunches

Tel: 07711086927 please leave a message

[Return to Contents](#)

Ethnic Dining Group

Traditionally, we choose restaurants serving food from around the world, some familiar, some more unusual. Everyone is welcome to join us, regularly or occasionally. We meet on the second Wednesday in the month.

If there is a restaurant you would like to try, or you have a particular favourite you are prepared to share, please let us know and we will be happy to add it to our list for future reference.

In September we are northward bound to South Wigston;

Gorkha 8848, 67 Blaby Road, South Wigston LE18 4PA.

7.30 pm Wednesday 13th September.

A Nepalese restaurant, there is, I am assured, plenty of free parking. The menu is available on the website.

If you wish to come along, please let us know by **Wednesday 6th September**

Thank you.

Denise and Geoff Taylor

07711086927 – please leave message.

denisetaylor551@gmail.com. **Please put Ethnic Dining in the Subject Line**

[Return to Contents](#)

Photography Group July 2023 Report

This month, in addition to reviewing our monthly picture topic, Garden Wildlife, one of our members, Nigel Bones, gave a presentation on the topic of producing a “Montage” image.

Nigel had spent the Easter weekend attending a “Webinar” workshop on how to produce a montage picture where multiple images are used to form a single picture. We are familiar with collages and Nigel explained that a collage is a number of separate pictures of different subjects on a single sheet (or picture). A montage is a central subject with different views of the same subject blended into the picture. Generally, none of the subject images have defined borders as the edges are blended against a common background.

Nigel had to “make” his own electronic brushes which were used to blend the images together. Over the week-end Nigel, step by step, produced his own montage. In addition to attending the “Webinar” Nigel had to provide source pictures. Using the family dog as the subject, Nigel had to take a series of pictures to a very precise format that would be suitable for blending into the final image. Nigel showed us his first attempts which looked amazing. Apparently, it can take longer to finish off these images than to produce the initial picture and Nigel is still refining the image when time permits.

Our thanks to Nigel and we are hoping to get a few of our members to have a go at producing a montage in the coming months.

This month’s picture topic was “Garden Wildlife”, and we had a wide variety of subjects. We viewed a lot beautiful butterflies and moths, bees, different types of flies, squirrels, a fox, slugs, spiders, and a colony of ants and their eggs which put many off their mid-morning refreshments (well almost). One of our members also included a Cow in a garden and we spent a little time explaining the term “wildlife”. However, it was a great picture, and we were pleased they sent it in.

As we are now firmly into the holiday season, our topic for August is what we are calling “A Grand Day Out” and we are looking for typical holiday snapshot pictures. There is no defined subject, just something that conveys a holiday feeling. It could be a day out or a more traditional holiday, rain, or shine.

We are continuing our meetings through the summer and our next meeting will be on Friday 25th August 2023, 10.00 am, in the Ullesthorpe Village Hall.

As usual, our meetings are open to all Wycliffe Lutterworth U3A members as regulars and other U3A members as guests. If you would like more information, e-mail us at the address below.

wlu3acamera@outlook.com.

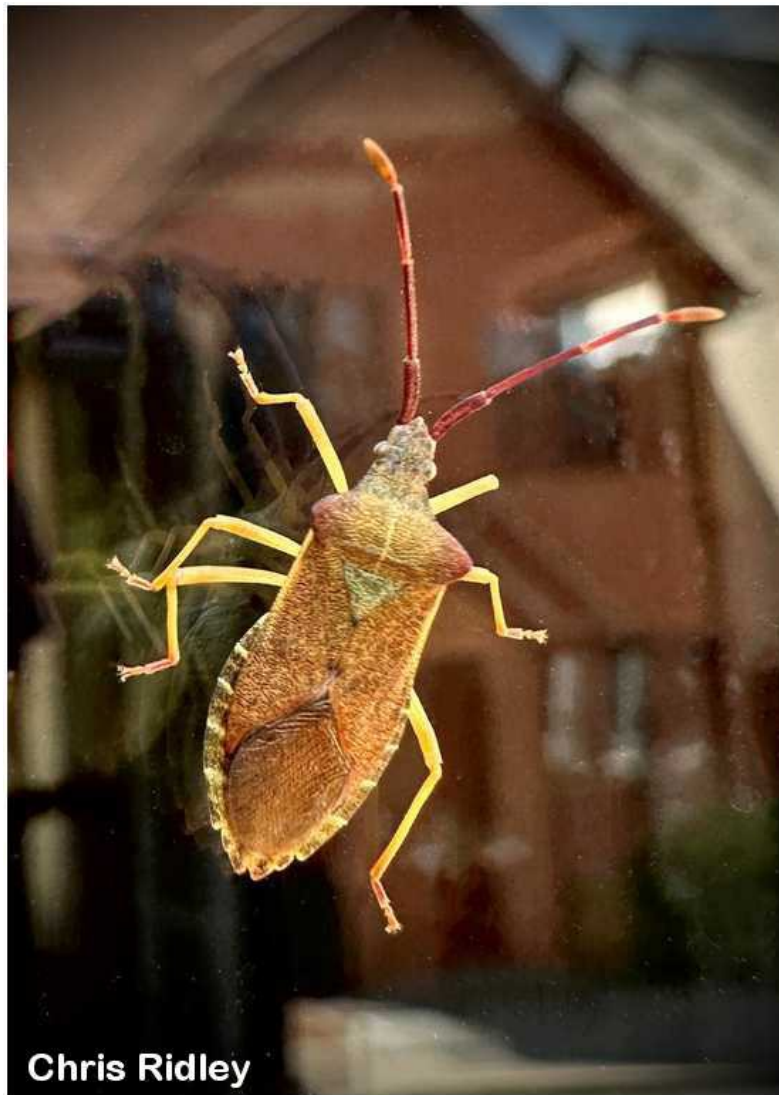
Michael Bates



Rawdon Bottom



Ursula Kanetis



Stamps

Please bring along your used stamps to the next meeting

As you know, Liz White of Lutterworth U3A is collecting used stamps on behalf of **Medical Detection Dogs**. They can be any used stamps (even just 1st or 2nd Class) but please could you ensure they have approximately a 1cm (roughly a finger's width) surround.

Please bring them along and give them to Sue Creeden at the monthly meeting. Alternatively, you can pop them through her door – 25 Holly Drive, Lutterworth. Sue will then pass them on to Liz.



Many thanks.

Sue

* * * * *

Articles, reports, news items etc. for inclusion in the next bulletin should be sent to the editor:

trudyhaddon.rylands@gmail.com

Deadline: last day of the month.

Committee Members

<u>Office</u>	<u>Name</u>
Chairperson	Colin Beadle
Membership Secretary.....	Andy Hetherington
Secretary	Hamish Paterson
Treasurer.....	Nigel Bones
Groups Co-ordinator.....	Colin Beadle
Speaker Finder.....	Andrea Nichol
Minutes Secretary.....	Anne Dean
Beacon Administrator.....	Andy Hetherington
Committee Member.....	Ruth Bones
Committee Member.....	Sue Poulter
Committee Member.....	Michael Bates
Committee Member	Sally Wood

Note: Any committee member can be contacted via our email address:

thewycliffelutterworthu3a@gmail.com

[Return to Contents](#)